



RS Autocares Pvt. Ltd.

Manufacturer of : Tip Trailers, Side Wall Trailers, Flat Bed Trailers, Semi Low Bed Trailers, Container Trailers, Bulker Trailers, Tank Trailers, etc.

- ✓ Higher Stability
- ✓ Ultra Strong Hauler
- ✓ Higher Payload

FULLY BUILT SOLUTIONS TIP TRAILERS

READY-TO-USE VEHICLES FOR YOUR INDUSTRY



Our Product Range

- Tip Trailer
- Tipper
- Flat Bed Trailer
- Trailer Container
- Container Load Body
- Semi Wall Trailer
- Side Board Trailer
- Air Suspension Trailer
- Semi Low Bed Trailer
- Customized Solutions
- Recovery Vehicle
- High Side Load Body
- Bulker Trailer
- Tank Trailer

India's standard for
Trailer Built-ups

www.rsautocares.com

About us



We are the manufacture of all types Trailers, Tippers, Tip Trailers, Flatbed Trailers, Customized Trailers, Side wall trailers, Semi Low Bed Trailers and Bulker Trailers, Tank Trailers etc. Our product all type capacities. We are use of super quality equipment, tools and modern designing facilities helps providing better quality product to customer which have got application in many transportation and construction field.

R S Autocares Pvt. Ltd. is one of the leading trailers manufacturers, renowned for its engineering expertise and after-sales support. Our founder Mr. Neeraj Dwivedi started working in 2006, founded RSAC in june 2022 and start the journey of manufacturing in Oct 2022. By his continuous hard work, he achieved great success and today is an expert in these products. The company has its Head Office at Tirwa Kannauj, U.P. and has state-of-the-art manufacturing facilities at Tilsara Village. (86,000 sq. ft. Work area). RSAC Manufactures its products fully-in-house tunes its item sources and suppliers adding its value to the goal of Make in India. The Company has professional technical team, reliable manufacturing equipment and high efficient service construction team. The Company devotes to provide the new and complete solution of Trailers by the advanced design concept and reliable equipment which is according to the customer need.

Mission & Vision

To become India's first choice company in Trailers manufacturing, we should focus on building a strong brand and reputation in the industry. This can be achieved by providing excellent customer service, delivering high-quality products, and being innovative in your approach.





Managing Director's Message

To be a complete solution provider in TRAILERS & TRANSPORTATION INDUSTRY with Competitive advantage in cost, quality and delivery

Our commitment to quality and excellence has put us firmly on the Industrial Map of India. Our vehicle like, Tip Trailers, Tippers, Flatbed Trailers, Customized Trailers, Side wall trailers, Semi Low Bed Trailers, Container Trailers, Bulker Trailers, Tank Trailers etc. have been used and tested in the extremes of conditions and have passed each assignment with flying colours. R S Autocares Pvt Ltd is committed to consumer satisfaction in terms of sales and service. With highly versatile team work and their skills developed a vast client portfolio and spanning success in this industry, our strength is developed by our unique ideas and values where in we develop excellent & smart services by giving equal importance to all.

WE STAND BY THE MOTTO ; CUSTOMER SATISFACTION IS OUR SUCCESS !

FACILITIES & STANDARD

DESIGN

We are having latest design tools like auto cad and solid works. Our dedicated and experienced design team is completely capable to take any challenge in new design development and engaged in continuous up gradation in products.



TESTING

We are having our own setup of testing raw material so that correct solution can be delivered.



MANUFACTURING

We are having all the required machining and fabrication facilities in house





Tip Trailer



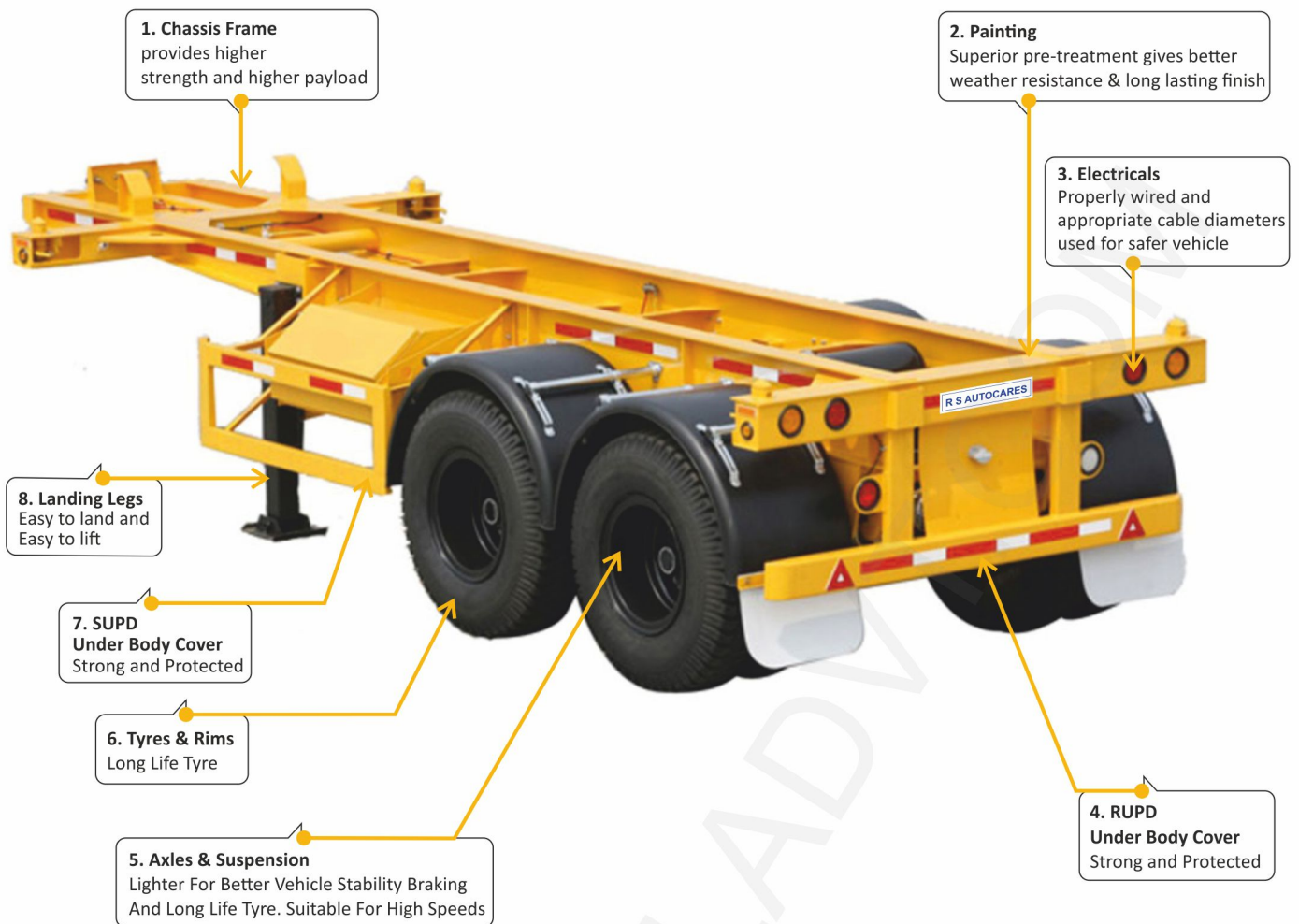
Silent Features

- Low Maintenance
- Rigid Construction to last long
- Higher Stability Design
- Best in class Aesthetic Finish
- Lower weight with higher pay load

Fully Built Solutions
TIP TRAILERS



Strong and Protected



Technical Specifications of Tip Trailer Make RS Autocares

Particular	Capacity		
Model Range	28 Cum	30 Cum	32Cum
Material Grade	BSK-46 & IS:2062	BSK-46 & IS:2062	BSK-46 & IS:2062
Hydraulic Kit	FE-169-4505 HIDROMASS	FE 169 / 175 / 191-4-5200 (HYVA / HIDROMASS)	FE 169 / 175/191-4-5200 (HYVA / HIDROMASS)
Intl. Dimension	7000 x 2490 x 1600	7500 x 2490 x 1620	7500 x 2490 x 1700
Suitable Chassis	Tata Signa / Ashok Leyland / Bharat Benz / Eicher	Tata Signa / Ashok Leyland / Bharat Benz / Eicher	Tata Signa / Ashok Leyland / Bharat Benz / Eicher
Axle with suspension system	YORK / KROSS	YORK / KROSS	YORK / KROSS
Tyre	Apollo/MRF/Ceat/JK/Michelin	Apollo/MRF/Ceat/JK/Michelin	Apollo/MRF/Ceat/JK/Michelin
Rim	Wheel India/TATA	Wheel India / TATA	Wheel India / TATA
Landing Leg	YORK / TATA	YORK / TATA	YORK / TATA
Brake Line	Wabco Auto Electrical	Wabco Auto Electrical	Wabco Auto Electrical
King Pin	Kross / York-2"- welded	Kross / York-2"- welded	Kross / York-2"- welded
Leaf Spring	90W x 12T x 10 Layers	90W x 12T x 10 Layers	90W x 16T x 10 Layers
Painting	Surface Finishing, Sand Blasting one coat Primer, two coat of paint (Paint Booth Technique) / Color as per customer req.		



Tip Trailers



Capacity

34 Cum	36 Cum	38 Cum	40 Cum
BSK-46 & IS:2062	BSK-46 & IS:2062	BSK-46 & IS:2062	BSK-46 & IS:2062
FE 169 / 175 / 191-4-5200 (HYVA / HIDROMASS)	FE 169 / 175 / 191-4-5200 (HYVA / HIDROMASS)	FE 169 / 175 / 191-4-5200 (HYVA / HIDROMASS)	FE 169 / 175 / 191-4-5200 (HYVA / HIDROMASS)
7500 x 2490 x 1830	8000 x 2490 x 1830	8300 x 2490 x 18350	8300 x 2490 x 1950
Tata Signa / Ashok Leyland / Bharat Benz / Eicher	Tata Signa / Ashok Leyland / Bharat Benz / Eicher	Tata Signa / Ashok Leyland / Bharat Benz / Eicher	Tata Signa / Ashok Leyland / Bharat Benz / Eicher
YORK / KROSS	YORK / KROSS	YORK / KROSS	YORK / KROSS
Apollo/MRF/Ceat/JK/Michelin	Apollo/MRF/Ceat/JK/Michelin	Apollo/MRF/Ceat/JK/Michelin	Apollo/MRF/Ceat/JK/Michelin
Wheel India / TATA	Wheel India / TATA	Wheel India / TATA	Wheel India / TATA
YORK / TATA	YORK / TATA	YORK / TATA	YORK / TATA
Wabco Auto Electrical	Wabco Auto Electrical	Wabco Auto Electrical	Wabco Auto Electrical
Kross / York-2"- welded	Kross / York-2"-welded	Kross / York-2" - Welded	Kross / York-2"- welded
90W x 16T x 10 Layers	90W x 16T x 10 Layers	90W x 16T x 10 Layers	90W x 16T x 10 Layers

Surface Finishing, Sand Blasting one coat Primer, two coat of paint (Paint Booth Technique)
/ Color as per customer req.

Tipper

RS Autocares' tippers are known for their advanced features, efficiency, and durability. The company continuously strives to improve its designs, incorporating the latest technological advancements to enhance performance and productivity. Whether it's transporting construction materials, aggregates, or other heavy loads, RS Autocares tippers are designed to deliver optimal performance, ensuring smooth operations and increased efficiency.



BRAND NAMES OF BOUGHT OUT ITEMS

Particulars	Brand / Manufacturer
Chassis Steel	Sail / Tata / Jsw / Essar / St-52-grade / Eqvt
Frame Work Steel	Sail / Tata / Jsw / Essar / St-52-grade / Eqvt
M.S. Sheets	Sail / Tata / Essar - IS 2062 Eqvt
Paints	Berger / Esdee
Fasteners	Tvs, Unbrako, Lps.
Hydraulic Kit	Hidromass / Hyva



Trailer

R S Trailers seems to be a reputable company that manufactures and supplies a variety of industrial trailers. With a focus on serving fleet owners, operators, and industrial applications, they offer an extensive range of trailers, including heavy-duty container chassis.

BRAND NAMES OF BOUGHT OUT ITEMS

Particulars	Brand / Manufacturer
Chassis Steel	Sail / Tata / Jsw / Essar / St-52-grade / Eqvt
M.S. Sheets	Sail / Jsw, Tata, Essar / Eqvt.
Frame Work Steel	Sail / Eqvt, IS 2062.
King Pin	Jost, York, Fuwa.
Axle	York, Kross
Paints	Berger / Esdee
Wheel Rims	Wheels India / Tata
Fasteners	Tvs, Unbrako, Lps.
Tyres	Apollo/MRF/Ceat/JK/Michelin



Flatbed Trailer

A flatbed trailer is an open trailer that has no sides or a permanent structure around its bed. It is designed to transport oversized, long, or wide materials, heavy machinery, or other types of cargo that cannot be accommodated within the confines of a closed trailer. The absence of sides on a flatbed trailer allows for easy loading and unloading from any direction, using cranes, forklifts, or other equipment.



BRAND NAMES OF BOUGHT OUT ITEMS

Particulars	Brand / Manufacturer
Chassis Steel	Sail / Tata / Jsw / Essar / St-52-Grade / Eqvt
Frame Work Steel	Sail / Tata / Jsw / Essar / St-52-grade / Eqvt
M.S. Sheets	Sail / Jsw / Tata/essar - IS 2062 Eqvt
Paints	Berger / Esdee
Fasteners	Tvs, Unbrako, Lps.
Tyres	Apollo/MRF/Ceat/JK/Michelin



Trailer Container

R S Autocares is manufacturing container trailers to meet the increasing requirements of customers. By designing and developing them in your advanced in-house manufacturing facility, you have control over the production process and can ensure the quality of the trailers.



BRAND NAMES OF BOUGHT OUT ITEMS

Particulars	Brand / Manufacturer
Chassis Steel	Sail / Tata / Jsw / Essar / St-52-grade / Eqvt
M.S. Sheets	Sail / Jsw, Tata, Essar / Eqvt.
Frame Work Steel	Sail / Eqvt, IS 2062.
King Pin	Jost, York, Fuwa.
Axle	York, Kross
Paints	Berger / Esdee
Wheel Rims	Wheels India / Tata
Fasteners	Tvs, Unbrako, Lps.
Tyres	Apollo/MRF/Ceat/JK/Michelin



Customized Solution

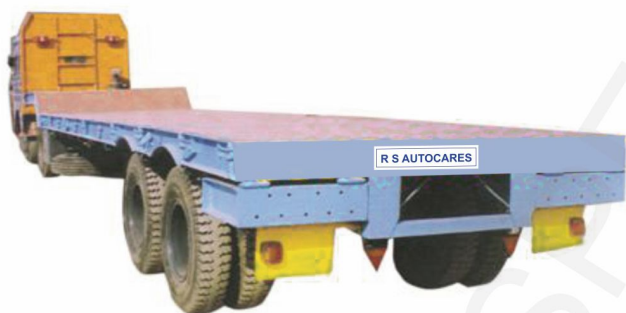
Vehicles Transport

RS Autocares offer the customized Solution which full fill the customer actual need. R S Trailers appears to be a reliable choice for individuals and businesses seeking industrial trailers and heavy-duty container chassis, thanks to their focus on quality and durability.

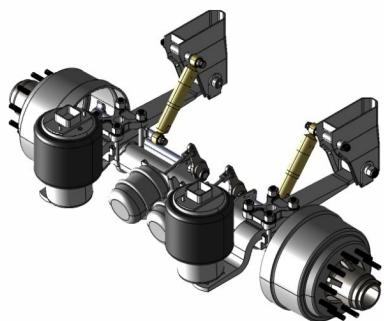


Semi Low Bed Trailer

R S Autocares offer wide range of Semi Low bed Trailers which Suitable for containers, steel coils or specialised applications. Both tandem and tridem axle versions. Suitable for carrying Iron Rod, Heavy Machineries.



Accessories



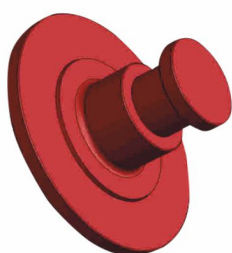
AIR SUSPENSION AXLE



BRAKE CHAMBER



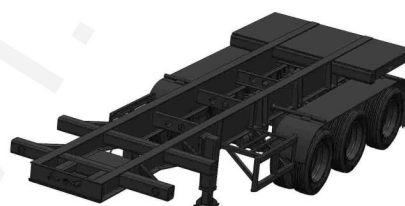
AIR RESERVOIR



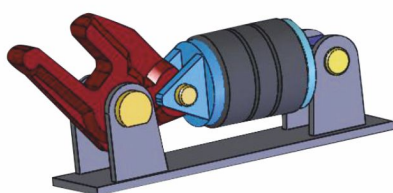
2 INCH KING PIN



EMERGENCY RELAY VALE



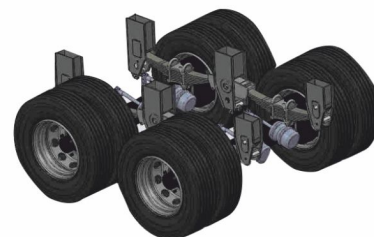
WHEEL CHASSIS



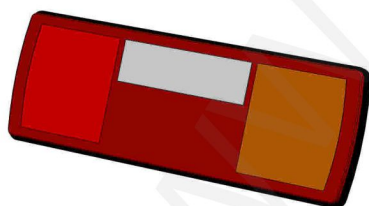
HYFIX



I-BEAM



AXLE AND SUSPENSION



REAR LAMP



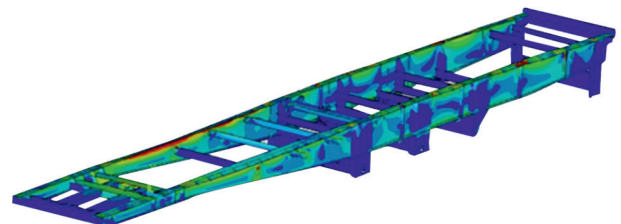
HYD. CYLINDER



LANDING LEG

Bulker Trailers and Tank Trailers

A cement bulker, also known as a cement tanker or cement trailer, is a specialized vehicle used for transporting and conveying loose cement in bulk quantities. It is commonly used in the construction industry to transport cement from manufacturing plants. Cement bulkers are designed to ensure the safe and efficient transportation of cement. R S Autocares offer different capacities of cement bulkers can vary depending on customer requirements and the specific design of the vehicle.



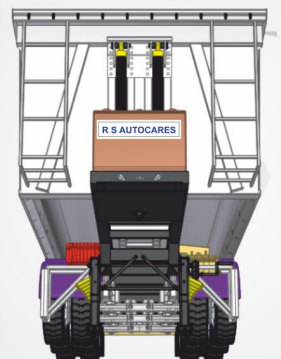
CHASSIS ANALYSIS



Factory Operation & Machinery



Products Gallery



Our Presence in
India 



RS Autocares Pvt. Ltd.

Manufacturer of : Tip Trailers, Side Wall Trailers, Flat Bed Trailers,
Semi Low Bed Trailers, Container Trailers, Bulker Trailers, Tank Trailers, etc.

Head Office : Durga Nagar, Tirwa, Kannauj-209732 (U.P.) India
Mfg. Unit : Vill-Tilsara, Post-Binaura Rampur, Tirwa, Kannauj-209732 (U.P.)
Phone No. : +91-7311189494, 7311189500, 7311189490, 7311189491, 7311189493
E-mail : info@rsautocares.com, Website : www.rsautocares.com